

Exterior Pro 2.6 m.look

A2 - s1, d0



For you to create



Fundermax

www.fundermax.com



Content

Product	5
m.look Exterior Advantages	8
Delivery forms and approvals	10
Collection	13
Color	14
Nature	20
Material	28
Sustainability	38
Decor overview	40

Note

Deviations from the original samples are due to printing techniques.

Disclaimer

The information provided in this document is for general information purposes only. Not all systems mentioned and described in this document are suitable or appropriate for all applications and areas. All customers and third parties are required to obtain detailed information about Fundermax products and their suitability for specific purposes. We also strongly recommend that you and all other users of this document seek independent professional advice regarding compliance with local planning and application requirements, applicable laws, regulations, standards, guidelines, and testing standards.

Copyright

All texts, photos, graphics, audio, and video files are subject to copyright and other laws protecting intellectual property and may not be reproduced, modified, or used for other websites for commercial purposes or similar. Any unauthorized reproduction and/or distribution or provision thereof constitutes a violation of copyright law (UrhG).

Fundermax

No matter whether it's furniture, facades, or interior design: where ideas and materials meet, you'll find Fundermax. As a global market leader in the field of compact panels and a manufacturer of high-quality wood-based materials and laminates, the company is proud to look back on a history spanning 130 years. The continued success is based on the highest quality, innovative and varied design, and sustainable production. Made in Austria—with great love for wood as a natural material, creations, and imagination.

- modern production facilities in Austria, Norway and the Netherlands
- around 1,400 employees
- part of Constantia Industries AG
- Integrated management system certified according to ISO standards: 9001 quality, 14001 environment, 50001 energy efficiency, 45001 occupational health and safety
- FSC, PEFC and SURE certified

02 Project Max & Moritz
Erding, Germany
Planning: Kutzschenbach
Ingenieurbüro für
Bauschäden und
Bauwerkserhält



Product

m.look Exterior

an A2 material that combines the best features

Environmentally friendly production

The glass fleece is impregnated with resin in impregnation plants, dried, and pressed under high pressure and heat to form durable, moisture-resistant panels. The exhaust air extracted during drying is treated by regenerative thermal oxidation, whereby the heat generated in the process is fed back into the process. For the installation of this efficient exhaust air treatment system, Fundermax was awarded the "Klima:aktiv" award by the Austrian Energy Agency and the Federal Ministry for the Environment as an example of best practice. This enables the production site to save around 6,000 tons of CO₂ per year.



Durable and maintenance-free

Extensive testing has certified that Fundermax m.look panels have a long service life*. The manufacturing process ensures high surface durability. Fundermax m.look panels require no maintenance to ensure their long service life. The surface of the panels does not get dirty easily. If necessary, they can be cleaned with standard cleaning agents. Sealing the edges is not necessary, even after cutting. The edge will take on its natural color after a short time.

Ecology

Environmental policy goals are met in both new buildings and renovation projects through the use of rear-ventilated curtain walls. The measurable reduction in heating energy minimizes carbon dioxide emissions, which are considered one of the biggest causes of environmental pollution. State and regional subsidy programs for energy-efficient facade renovations are still available.

Disposal and recycling

The disposal of cuttings and sawdust is carried out in the same way as for building materials. In EU countries, the European Waste Catalogue applies in accordance with the Waste List Regulation. Depending on the origin of the waste, a decision must be made as to which 6-digit code number to assign. The waste disposal company can assist you with classification in accordance with the Waste List Regulation.

m.look Exterior A2 material with HPL surface

the fire-resistant panel for architecturally appealing solutions

m.look

m.look opens a door to a world full of visual highlights and contemporary architecture. A fire-resistant material for architecturally limitless ideas with no height restrictions and a building material class of A2-s1, d0.

Planning visionary buildings is an exciting challenge that requires experience and ingenuity. Impressive buildings deserve smart materials that recognise the value of these special places. m.look is one such material.

New freedom for creativity

m.look (A2) implements design ideas beyond 20 meters in height and convincingly transfers creative designs into reality.

Where previously only a limited selection of materials with limited designs was available, m.look now opens up new visual worlds.

Innovative

A lightweight and mechanically stable panel element has been created from novel material combinations, innovative material developments and proven Fundermax production technology.

m.look is an architectural façade panel with a highly resilient, glass fiber-reinforced, predominantly mineral, non-combustible core and a highly weather-resistant, decorative and patented HPL surface, the technology for which has been used in successful Fundermax products for many years. This means that m.look remains resistant to adverse weather and environmental influences.

Manufactured using the HPL process, the decorative HPL surface impresses above all with its tested properties in accordance with EN438-2.

03 Project: Bienvenue Wien
Vienna, Austria
Planning: M&S Architekten
ZT GmbH



m.look Exterior Advantages

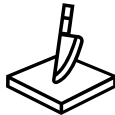


- Extensive range of designs/decorative finishes (plain, nature, material)
- Large format / cost-effectiveness
- Hail-resistant
- Use in decorative composite with Max Compact Exterior
- Permanent anti-graffiti protection
- Large fixing distances, less installation work
- No edge sealing necessary

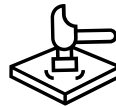




fire-resistant
EN 13501.1; A2-s1, d0



scratch-resistant
EN 438-2/25



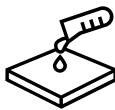
impact-resistant
EN 438-2/21



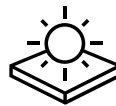
low thickness swelling
EN 317



highly weather-resistant



solvent-resistant



optimally lightfast
EN-438-2/29



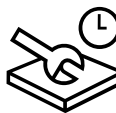
dimensional change
ETAGO34



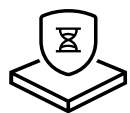
double sided



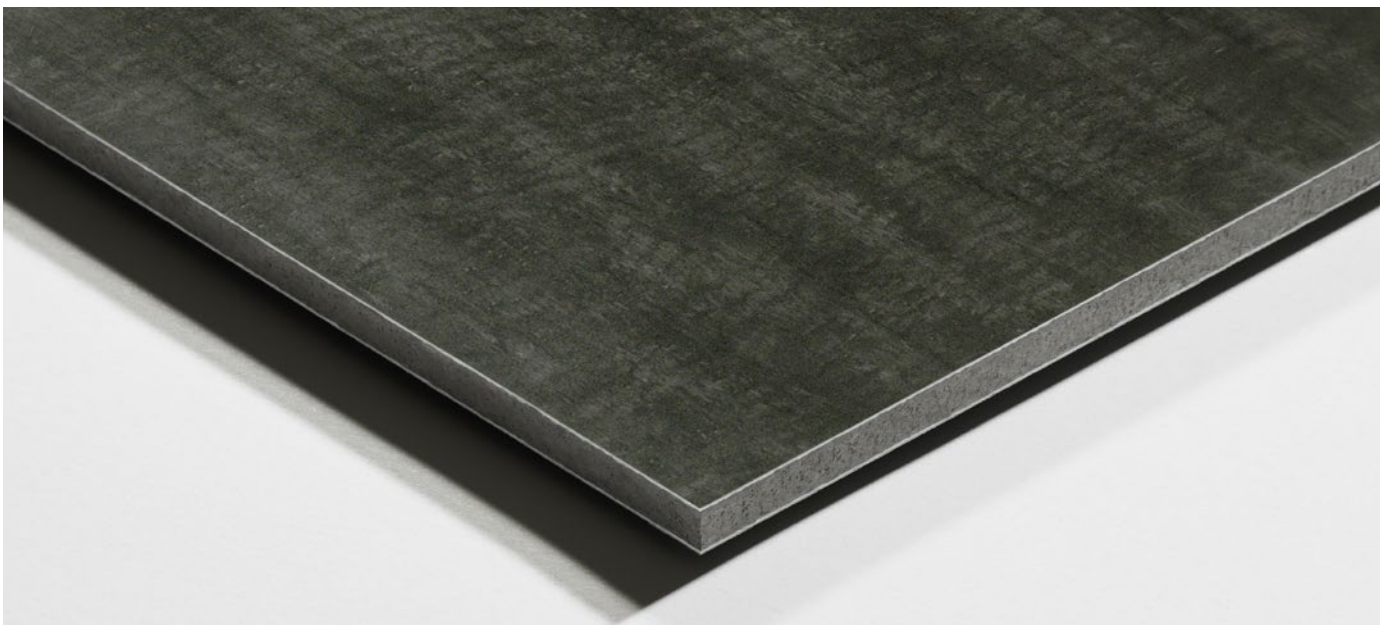
easy to clean



quick installation



durable



Delivery forms and approvals

m.look is an architectural façade panel with a highly resilient, glass fiber-reinforced, predominantly mineral, non-combustible core and a highly weather-resistant decorative surface. The decorative surface is characterized above all by its high scratch resistance, light fastness, impact resistance, anti-graffiti properties, ease of cleaning and hail resistance. Properties tested in accordance with EN438-2.

Format

3,580 x 1,580 mm

Tolerances - 0 / +10 mm

The panel formats are production formats. If dimensional and angular accuracy is required, cutting on all sides is recommended. Depending on the cut, the net dimension is reduced by approx. 10 mm.

Thicknesses

7.0 mm

Tolerance: +0.8 / -0.4mm

9.0 mm

Tolerance: +0.8 / -0.5mm

Surface

NT

Physical properties

Specific weight 1.8 g/cm³

Complies with the requirements of EN 438 with regard to climate resistance, UV weather resistance and surface resistance. Further technical details and information on processing and installation can be found in the 'm.look Technik' brochure.

Classification

A2-s1, d0 according to EN 13501-1

Approvals

Europe

Building material classification A2-s1, d0 according to EN 13501-1

Germany

General building authority approval from the German Institute for Building Technology in Berlin. Approval number Z-10.3-711 (exterior application) Approval number Z-56.426-1017 (interior application)

Austria

Tested according to ÖNORM B3800-5 for vertical façades, sloping façades and soffits.

Switzerland

Building material classification A2-s1, d0 according to EN 13501-1. Listed in the fire register.

Asia

Building material classification A2-s1, d0, t1

USA/Canada

ASTM E136 passed ASTM E84 Class A

To the m.look
technology brochure



05 Project: Event hall
Hallwang, Austria
Planning: Architekten Resmann & Schindlmeier



06 Project: Office building Fixing Group
Neuhofen im Innkreis, Austria
Planning: KEKO Immobilien
u. Planungsbüro

Collection

Decor variety

The wide range of possible decors first inspires users and then viewers. The logical consequence of this is that m.look Exterior panels are used in both commercial and public spaces for outdoor applications.

Outdoor applications with m.look Exterior

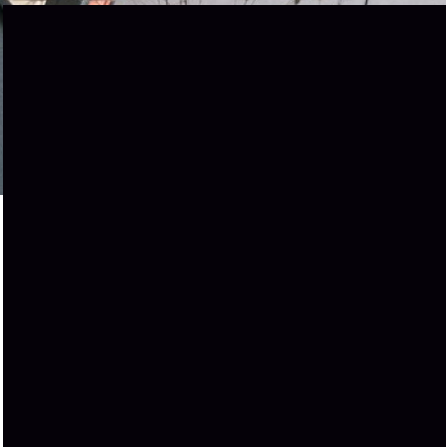
m.look opens a door to a world full of visual highlights and contemporary architecture. Planning visionary buildings is an exciting challenge that requires experience and ingenuity. Impressive buildings deserve smart materials that recognize the value of these special places. m.look is one such material.

Color

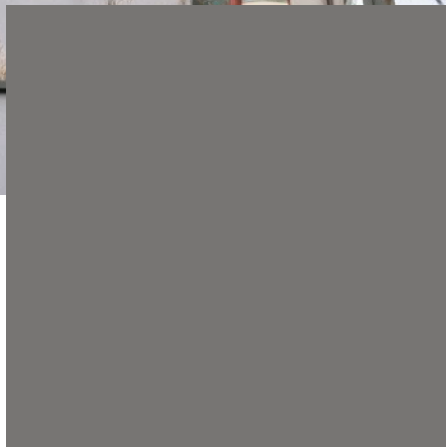
Architecture means offering perspectives and powerfully shaping public perception.

In our Exterior 2.3 | Essential Color Range, you will find an extensive spectrum of colors to convey the messages of architecture in a unique, unrepeatable form.

For you to create.



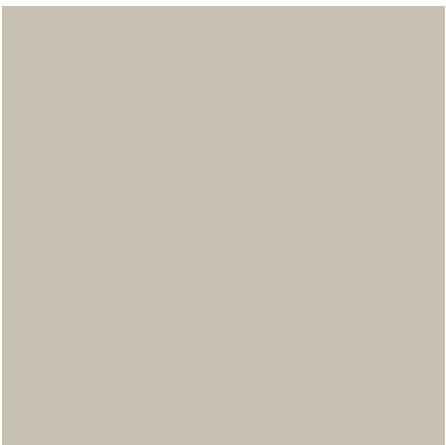
5005 Pure Black



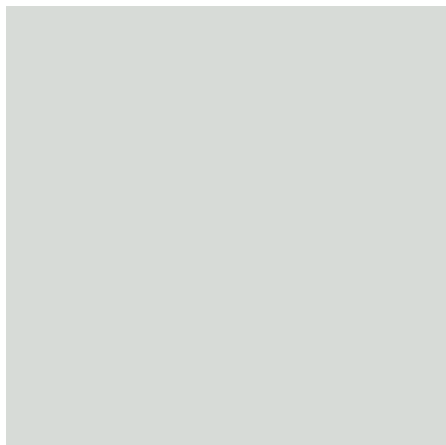
5004 Lava Rock



5003 Charcoal Grey



5002 Smoke



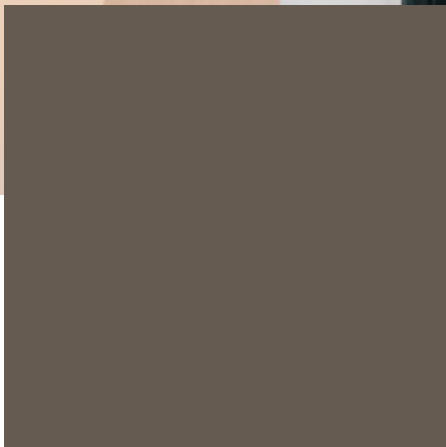
5001 Ice Silver



5000 White Avalanche



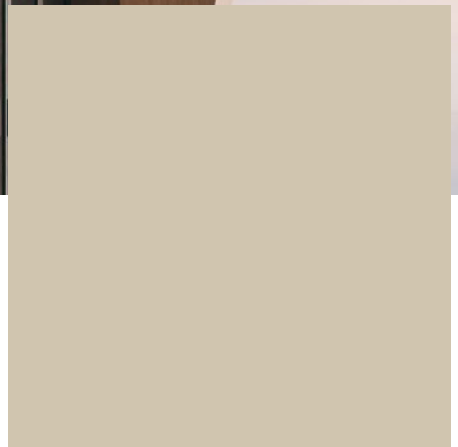
© Elena Litvinova



0887 Dark Offroad Greige



0144 Costa



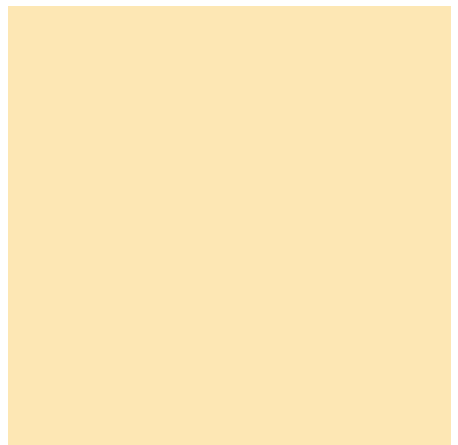
0071 Fresco



0864 Mustard



5113 Curcuma



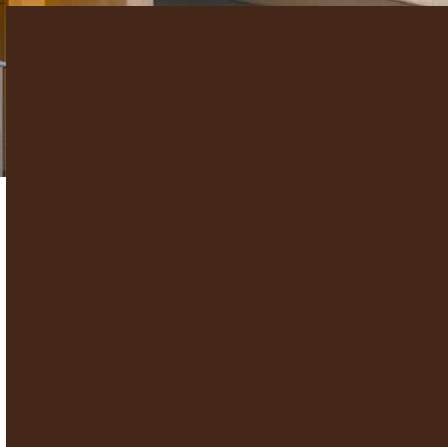
5110 Ginger



07 Project: Vacation home
St. Urban, Austria
Planning: Zach Parkett
Vertriebs GmbH



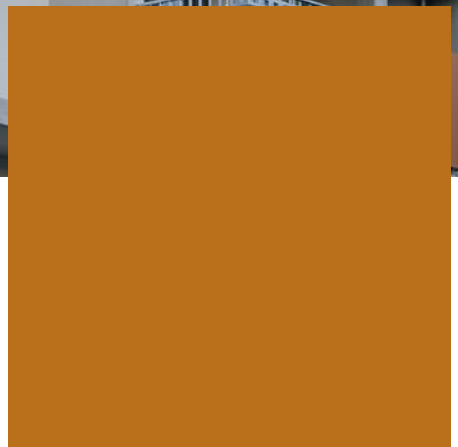
© Michael Nigg



0875 Chocolate Brownie



5031 Hazel



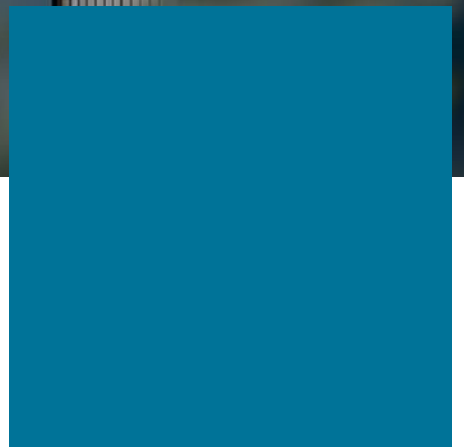
5032 Cinnamon



5090 Deep Ocean



5092 Blue Mountain



5070 Poseidon

Nature

Whatever colors, shapes and structures humans compose, the world around us has already conceived them in one form or another long before.

There is so much to discover, often in the smallest details. Our nature decorators are the result of patient observation and a deep understanding of nature. This is probably also the secret behind why they quote nature so accurately and yet so playfully, easily and convincingly.


5172 Marshland Oak

0869 Smoked Marvel Walnut


0847 Smoked Jazz Oak

A close-up photograph of a wood surface with a dark, charcoal grey-brown hue. The grain is vertical and shows a mix of fine, tight lines and larger, more irregular patterns, characteristic of oak. There are some darker spots and knots visible.

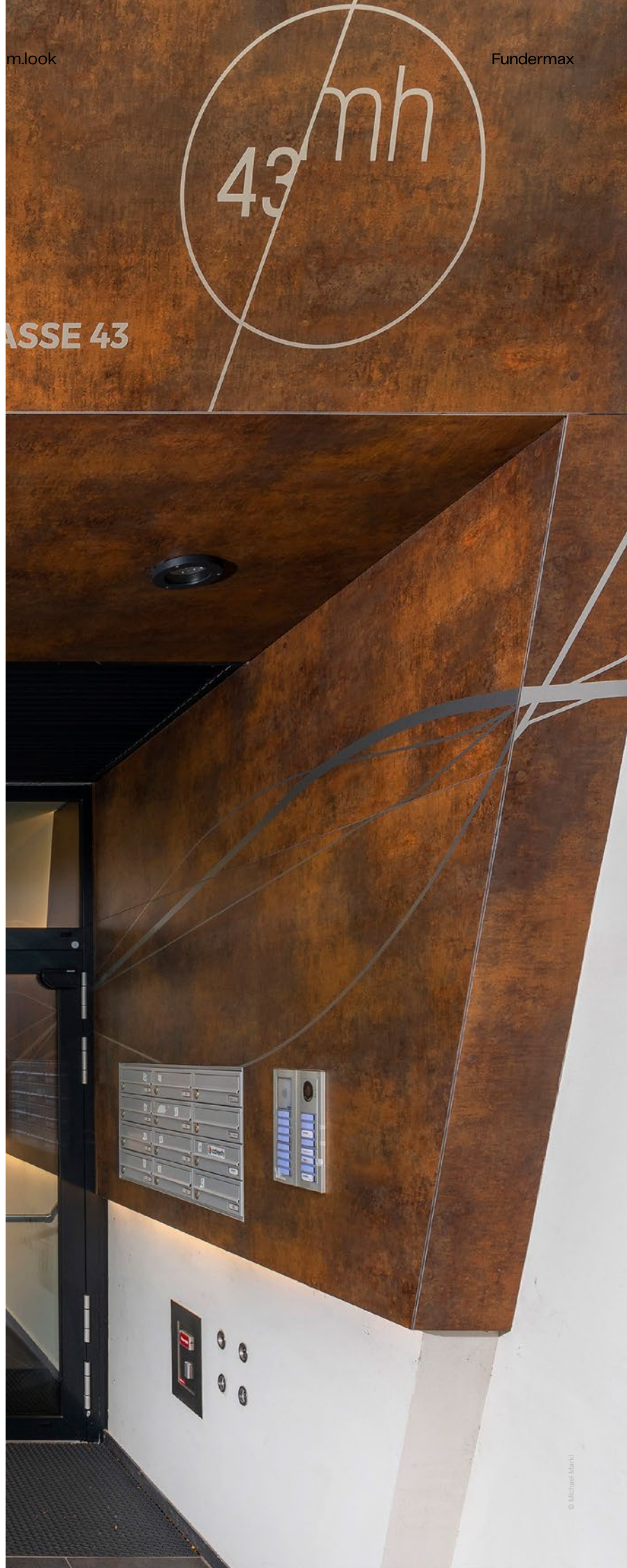
0820 Hazel Heritage Oak

A close-up photograph of a wood surface with a dark, almost black-brown hue. The grain is vertical and very straight and uniform, with subtle variations in tone.

0824 Brown Bistro Oak

A close-up photograph of a wood surface with a rich, warm brown hue. The grain is vertical and has a slightly more pronounced, wavy pattern compared to the other samples.

0932 Akro Terra



- 08 Project: MH43
- Vienna, Austria
- Planning: MES Real Estate
- Services GmbH & Wideshot
- Design GmbH



09 Project: Volvo Dealer Center
Ukraine
Planning: Vlad Gushel

0846 Caramel Jazz Oak

0931 Akro Almond

0125 Natural Oak

0161 Light Akro

0870 Dark Honey Marvel Walnut

5173 Barrique Oak



Material

Decors that appeal to something fundamental in their appearance are gathered here. These are visual designs whose simplicity and persuasiveness are beyond question, because the decors refer to the basic experiences of every human being.

Elements in the open countryside, gorges in endless landscapes, rock formations of overwhelming power and grandeur: these decors breathe all this and more, striking a chord in the viewer like hardly any other decor can.

0809 Mustang Black

0799 Black Jack

0790 Mustang Grey


0427 Skyline

0898 Porto Nero Slate

0897 Grey Cliffhanger Slate

A dark, almost black, textured surface with a fine, grainy texture.

0159 Akro Black

A dark grey, textured surface with a slightly grainy, concrete-like appearance.

0894 Black Pearl Concrete

A light beige or cream-colored textured surface with a fine, fibrous texture and some minor dark spots.

0426 Loft

0026 Prado Alu Grey

0027 Prado Agate Grey

0158 Akro Grey



12 Project: Single-Family home Loimer
Linz, Austria
Planning: Arch. Dipl.-Ing. Gerald Anton Steiner



0982 Mustang Marsh Brown

0981 Mustang Nutmeg

0980 Mustang Cream

0603 Ardens

0983 Black Jack Mocca

0429 Corro

Sustainability

We complete what nature gifts us.

Rooted in our ecological values, we are shaping a sustainable future and have made sustainability a core principle of our corporate philosophy.

We strive to manufacture our products with natural raw materials, to reduce the negative effects on humanity and the environment and to avoid waste. This is achieved through sustainable investments and the ensuring of clean and energy efficient processes, as well as ongoing controls and continuous improvement.

Our environmental and energy policy is reflected in five key areas of action within the Fundermax Green Deal and is part of our sustainability compass for Environment, Social, and Governance (ESG).

Find out more on our homepage Sustainability - Environment & Energy under this QR code.



Sustainability website



The five key action areas of the Fundermax Green Deal:



Corporate Responsibility

Integrated Management System certified according to ISO standards 9001 Quality, 14001 Environmental, 50001 Energy Efficiency, 45001 Occupational Safety



Effective Climate Protection

Reduction of fossil CO2 emissions by 50%



Environmentally Friendly Production

Resource Conservation through Circular Economy



Products from Nature

100% of wood and paper from certified sustainably managed forests



Sustainable Energy

Efficient Use of Green Electricity and Green Heat for Production



Decor overview





0026 Prado Alu Grey



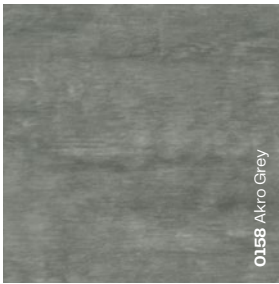
0603 Ardens



0820 Hazel Heritage Oak



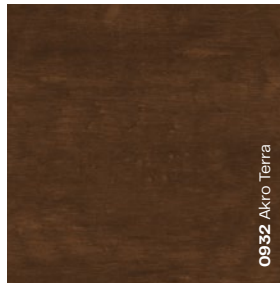
0161 Light Akro



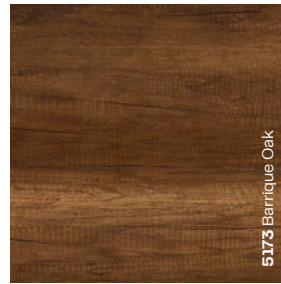
0158 Akro Grey



0429 Corro



0932 Akro Terra



5175 Barrique Oak



0027 Prado Agate Grey



0983 Black Jack Mocca



0824 Brown Bistro Oak



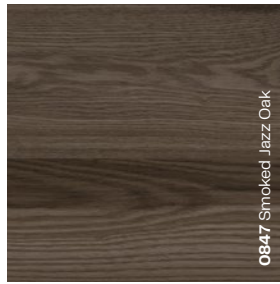
0870 Dark Honey Marvel Walnut



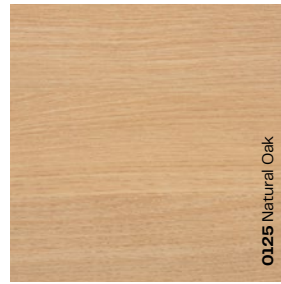
0426 Loft



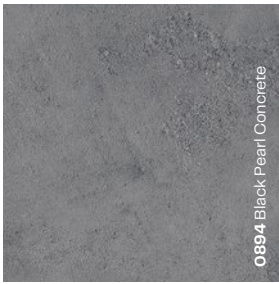
0980 Mustang Cream



0847 Smoked Jazz Oak



0125 Natural Oak



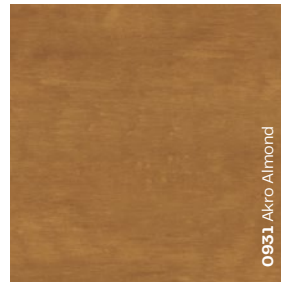
0894 Black Pearl Concrete



0981 Mustang Nutmeg



0869 Smoked Marvel Walnut



0931 Akro Almond



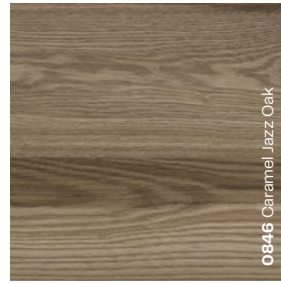
0159 Akro Black



0982 Mustang Marsh Brown



5172 Marshland Oak



0846 Caramel Jazz Oak





Fundermax Deutschland GmbH

Mundenheimer Weg 2
D-67117 Limburghof
infoGermany@fundermax.biz
www.fundermax.com

Fundermax France S.a.r.l.

29 Rue Maurice Flandin
F-69003 Lyon
accueil@fundermax.biz
www.fundermax.com

Fundermax India Pvt. Ltd.

Sy. No. 7, Honnenahalli, Doddballapur Road,
IND-Yelahanka Hobli, Bangalore - 560064
officeindia@fundermax.biz
www.fundermax.in

Fundermax Italia s.r.l.

Viale Venezia 22
I-33052 Cervignano del Friuli
infoitaly@fundermax.biz
www.fundermax.com

Fundermax North America, Inc.

9800 Twin Lakes Parkway, Suite B,
US-Charlotte, North Carolina 28269
contactfna@fundermax.biz
www.fundermax.us

Fundermax Polska Sp. z o.o.

ul. Rybitwy 12
PL-30 722 Kraków
T: +48 (0)12 65 34 528
infopoland@fundermax.biz

Fundermax Swiss AG

Industriestrasse 38
CH-5314 Kleindöttingen
T: +41 (0)56 268 83 11
infoswiss@fundermax.biz
www.fundermax.com

Fundermax GmbH

Klagenfurter Straße 87-89, A-9300 St. Veit/Glan

T: +43 (0)5 9494-0, F: +43 (0)5 9494-4200

office@fundermax.at

www.fundermax.com

Imprint:

Fundermax GmbH, 9300 St. Veit/Glan, Austria
Producer: Print Alliance HAV Produktions GmbH, 2540 Bad Vöslau, Austria